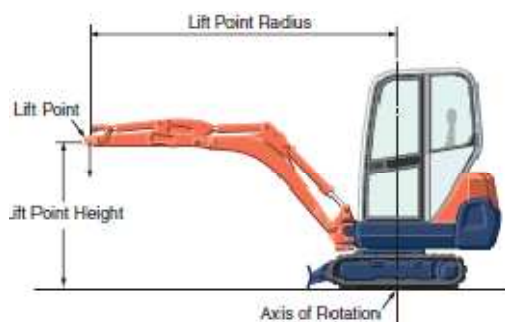


Model			KX41-3S	KX41-3V
Machine weight	Cabin	kg	1610	1720
	Canopy	kg	1520	1630
Bucket capacity, std. SAE/CECE		m ³	0.04	
Bucket width	with side teeth	mm	474	
	without side teeth	mm	450	
Model			D902-BH	
Type			Water-cooled, diesel engine E-TVCS	
Engine	Output ISO9249	PS/rpm	16/2300	
		kW/rpm	11.8/2300	
Number of cylinders			3	
Bore x stroke		mm	72 x 73.6	
Displacement		cc	898	
Overall length		mm	3660	
Overall height	Cabin	mm	2280	
	Canopy	mm	2280	
Swivelling speed		rpm	9.1	
Rubber shoe width		mm	230	
Tumbler distance		mm	1090	1230
Dozer size (width x height)		mm	990 x 230	990/1300 x 230
Hydraulic pumps	P1,P2		Variable displacement pump	
	Flow rate	ℓ/min	17.3	
	Hydraulic pressure	MPa(kgf/cm ²)	21.6 (220)	
	P3		Gear type	
Hydraulic pumps	Flow rate	ℓ/min	10.4	
	Hydraulic pressure	MPa(kgf/cm ²)	21.6 (220)	
Max. digging force	Arm	kN (kgf)	7.8 (796)	
	Bucket	kN (kgf)	15.6 (1592)	
Boom swing angle (left/right)		deg	73/50	
Auxiliary circuit	Flow rate	ℓ/min	27.7	
	Hydraulic pressure	MPa(kgf/cm ²)	21.6 (220)	
Hydraulic reservoir		ℓ	27	
Fuel tank capacity		ℓ	21	
Max. travelling speed	Low	km/h	2.4	2.2
	High	km/h	4.3	4.0
Ground contact pressure	Cabin	kPa(kgf/cm ²)	27.5 (0.28)	26.9 (0.27)
	Canopy	kPa(kgf/cm ²)	25.7 (0.26)	25.5 (0.26)
Ground clearance		mm	160	



LIFTING CAPACITY

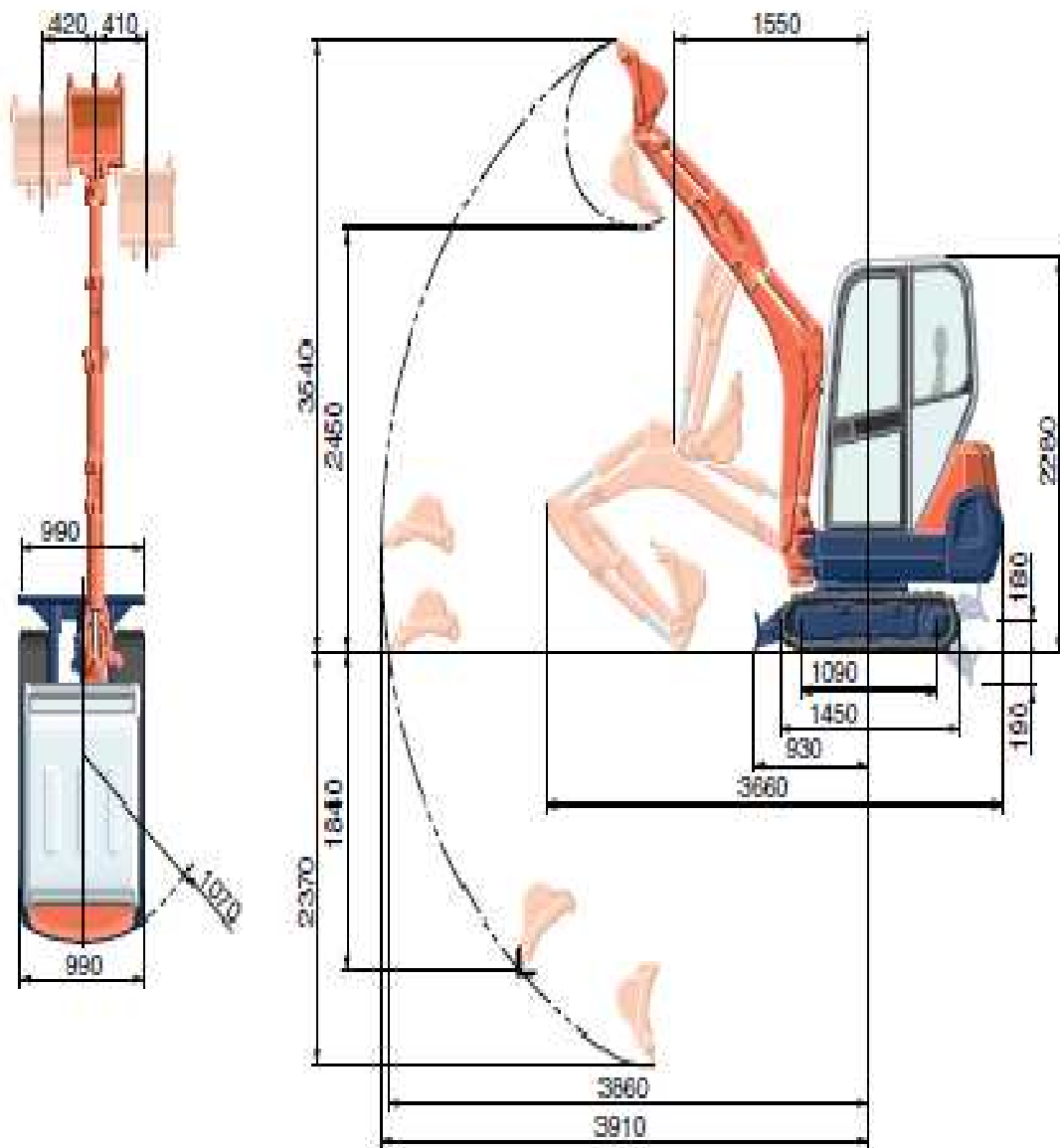
		kN (ton)					
Lift Point Height	Lifting point radius (2m)			Lifting point radius (3m)			
	Over-front		Over-side	Over-front		Over-side	
	Blade Down	Blade UP		Blade Down	Blade UP		
S	1.5m	2.6 (0.26)	2.6 (0.26)	2.6 (0.26)	2.7 (0.28)	1.9 (0.20)	1.5 (0.16)
	1.0m	4.1 (0.42)	3.6 (0.37)	2.8 (0.28)	2.8 (0.29)	1.9 (0.19)	1.5 (0.15)
	0.5m	5.2 (0.53)	3.4 (0.34)	2.6 (0.26)	2.9 (0.30)	1.8 (0.19)	1.4 (0.15)
	0m	5.3 (0.54)	3.2 (0.33)	2.4 (0.25)	2.8 (0.29)	1.8 (0.18)	1.4 (0.14)

Kubota

KX41-3S

WORKING RANGE

KX41-3S



WINNER PLANT

SUSSEX: 01903 230700

SURREY: 01483 456789

EMAIL: SALES@WINNERPLANT.CO.UK