

# HITACHI ZAXIS 130

## ENGINE

Model .....	Isuzu AJ-4J11X
Type .....	4-cycle water-cooled, direct injection
Aspiration .....	Turbocharged, intercooled
No. of cylinders .....	4
Rated power	
ISC 9249, net .....	69.0 kW (93.0 HP) at 2 000 min <sup>-1</sup> (rpm)
EEC 80/1269, net ..	69.0 kW (93.0 HP) at 2 000 min <sup>-1</sup> (rpm)
SAE J1349, net .....	69.0 kW (93.0 HP) at 2 000 min <sup>-1</sup> (rpm)
Maximum torque .....	372 N·m (38 kgf·m) at 1 600 min <sup>-1</sup> (rpm)
Piston displacement ..	2.999 L
Bore and stroke .....	95.4 mm x 104.9 mm
Batteries .....	2 x 12 V / 55 Ah

## HYDRAULIC SYSTEM

- Work mode selector  
Digging mode / Attachment mode
  - Engine speed sensing system
- |                     |  |
|---------------------|--|
| Main pumps .....    | 2 variable displacement axial piston pumps |
| Maximum oil flow .. | 2 x 117 L/min                              |
| Pilot pump .....    | 1 gear pump                                |
| Maximum oil flow .. | 33.6 L/min                                 |

## Hydraulic Motors

Travel .....	2 variable displacement axial piston motors
Swing .....	1 axial piston motor

## Relief Valve Settings

Implement circuit .....	34.3 MPa (350 kgf/cm <sup>2</sup> )
Swing circuit .....	32.3 MPa (329 kgf/cm <sup>2</sup> )
Travel circuit .....	34.3 MPa (350 kgf/cm <sup>2</sup> )
Pilot circuit .....	3.9 MPa (40 kgf/cm <sup>2</sup> )

## Hydraulic Cylinders

High-strength piston rods and tubes. Cylinder cushion mechanisms provided in boom and arm cylinders to absorb shock at stroke ends.

## Dimensions

	Quantity	Bore	Rod diameter
Boom	2	105 mm	70 mm
Arm	1	115 mm	80 mm
Bucket	1	100 mm	70 mm
Positioning	1	140 mm	95 mm

## Hydraulic Filters

Hydraulic circuits use high-quality hydraulic filters. A suction filter is incorporated in the suction line, and full-flow filters in the return line and swing/travel motor drain lines.

## UPPERSTRUCTURE

### Revolving Frame

Welded sturdy box construction, using heavy-gauge steel plates for ruggedness. D-section frame for resistance to deformation.

### Swing Device

Axial piston motor with planetary reduction gear is bathed in oil. Swing circle is single-row, shear-type ball bearing with induction-hardened internal gear. Internal gear and pinion gear are immersed in lubricant. Swing parking brake is spring-set/hydraulic-released disc type.

Swing speed .....	13.7 min <sup>-1</sup> (rpm)
Swing torque .....	33.0 kN·m (3 370 kgf·m)

### Operator's Cab

Independent spacious cab, 1 005 mm wide by 1 675 mm high, conforming to ISO\* Standards. Reinforced glass windows on 4 sides for visibility. Front windows (upper and lower) can be opened. Redlining seat with armrests; adjustable with or without control levers.

\* International Standardization Organization

## UNDERCARRIAGE

### Tracks

Tractor-type undercarriage. Welded track frame using selected materials. Side frame welded to track frame. Lubricated track rollers, idlers, and sprockets with floating seals.

Track shoes with triple grousers made of induction-hardened rolled alloy. Heat-treated connecting pins with dirt seals. Hydraulic (grease) track adjusters with shock-absorbing recoil springs.

### Numbers of Rollers and Shoes on Each Side

Upper rollers .....	1 : ZX130-3 2 : ZX130LCN-3
Lower rollers .....	7
Track shoes .....	44 : ZX130-3 46 : ZX130LCN-3
Track guard .....	1

### Travel Device

Each track driven by 2-speed axial piston motor through planetary reduction gear for counterrotation of the tracks. Sprockets are replaceable.

Parking brake is spring-set/hydraulic-released disc type. Travel shockless relief valve built in travel motor absorbs shocks when stopping travel.

Automatic transmission system: High-Low.

Travel speeds .....	High : 0 to 5.5 km/h Low : 0 to 3.4 km/h
---------------------	---

Maximum traction force .. 95 kN (9 690 kgf)

Gradeability .....

35° (70%) continuous

**WINNER PLANT**

SUSSEX: 01903 230700

SURREY: 01483 456789

EMAIL: SALES@WINNERPLANT.CO.UK

# HITACHI ZAXIS 130

## WEIGHTS AND GROUND PRESSURE

### ZX130-3 with Monoblock Boom:

Equipped with 4.60 m monoblock boom, 2.52 m arm and 0.50 m<sup>3</sup> (SAE, PCSA heaped) bucket.

Shoe type	Shoe width	Operating weight	Ground pressure
Triple grouser	500 mm	12 500 kg	39 kPa (0.40 kgf/cm <sup>2</sup> )
	600 mm	12 700 kg	33 kPa (0.34 kgf/cm <sup>2</sup> )
	700 mm	12 900 kg	28 kPa (0.29 kgf/cm <sup>2</sup> )
	800 mm	13 200 kg	25 kPa (0.26 kgf/cm <sup>2</sup> )
Pad	500 mm	12 400 kg	38 kPa (0.39 kgf/cm <sup>2</sup> )

### ZX130LCN-3 with Monoblock Boom:

Equipped with 4.60 m monoblock boom, 2.52 m arm and 0.50 m<sup>3</sup> (SAE, PCSA heaped) bucket.

Shoe type	Shoe width	Operating weight	Ground pressure
Triple grouser	500 mm	12 700 kg	38 kPa (0.39 kgf/cm <sup>2</sup> )
	600 mm	12 900 kg	32 kPa (0.33 kgf/cm <sup>2</sup> )
	700 mm	13 100 kg	27 kPa (0.28 kgf/cm <sup>2</sup> )
	800 mm	13 300 kg	25 kPa (0.25 kgf/cm <sup>2</sup> )
Pad	500 mm	12 500 kg	37 kPa (0.38 kgf/cm <sup>2</sup> )

### ZX130-3 with Monoblock Boom with Blade (Optional):

Equipped with 4.60 m monoblock boom, 2.52 m arm and 0.50 m<sup>3</sup> (SAE, PCSA heaped) bucket.

Shoe type	Shoe width	Operating weight	Ground pressure
Triple grouser	500 mm	13 600 kg	43 kPa (0.44 kgf/cm <sup>2</sup> )

## SERVICE REFILL CAPACITIES

Fuel tank .....	250.0 L
Engine coolant .....	16.0 L
Engine oil .....	17.0 L
Swing device .....	3.2 L
Travel device .....	4.0 L
(each side)	
Hydraulic system .....	170.0 L
Hydraulic oil tank .....	70.0 L

## SOUND LEVEL RESULTS (2000/14/EC)

LwA : sound-power level of airborne noise

LpA : sound level at operator's station

unit : dB(A)

	LwA	LpA
ZX130-3 / ZX130LCN-3	99	69

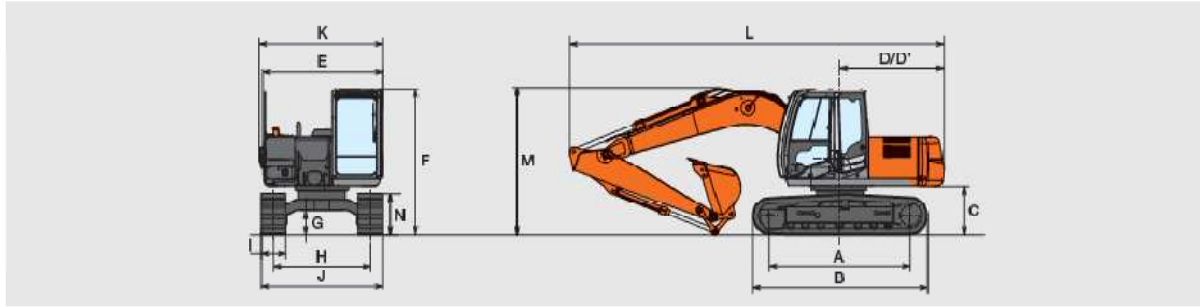
**WINNER PLANT**

SUSSEX: 01903 230700

SURREY: 01483 456789

EMAIL: SALES@WINNERPLANT.CO.UK

# HITACHI ZAXIS 130



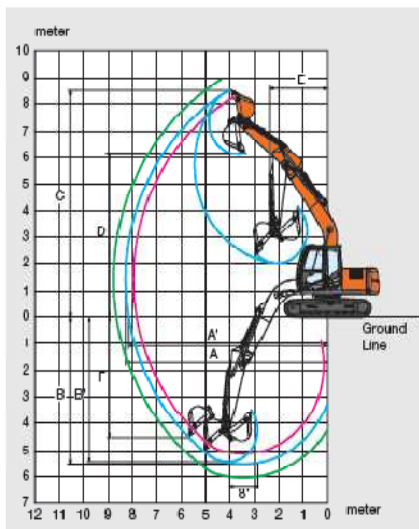
Unit: mm

	ZX130-a	ZX130LCN-a
A Distance between tumbler	2 880	3 050
B Undercarriage length	3 580	3 750
* C Counterweight clearance	890	890
D Rear-end swing radius	2 130	2 130
D' Rear-end length	2 130	2 130
E Overall width of upperstructure	2 460	2 460
F Overall height of cab	2 740	2 740
* G Min. ground clearance	440	440
H Track gauge	1 990	1 990
I Track shoe width	G 500	G 500
J Undercarriage width	2 490	2 490
K Overall width	2 490	2 490
L Overall length		
With 2.10 m arm	7 660	7 660
With 2.52 m arm	7 660	7 660
With 3.01 m arm	7 670	7 670
M Overall height of boom		
With 2.10 m arm	2 740	2 740
With 2.52 m arm	2 740	2 740
With 3.01 m arm	** 2 740	** 2 740
N Track height with triple grouser shoes	800	800

\* Excluding track shoe lug    \*\* The dimensions is shown in transportation of the arm.    G: Triple grouser shoe

## WORKING RANGES : MONOBLOCK BOOM

Unit: mm



	ZX130-a / ZX130LCN-a		
	4.60 m Monoblock boom		
Arm length	2.10 m	2.52 m	3.01 m
A Max. digging reach	7 960	8 320	8 790
A' Max. digging reach (on ground)	7 830	8 200	8 670
B Max. digging depth	5 150	5 570	6 060
B' Max. digging depth (8' level)	4 910	5 350	5 880
C Max. cutting height	8 370	8 570	8 900
D Max. dumping height	5 950	6 150	6 490
E Min. swing radius	2 070	2 090	2 640
F Max. vertical wall	4 270	4 550	5 020
Duct digging force ISO	99 kN (10 100 kgf)		
Bucket digging force SAE : PCSA	86 kN (8 800 kgf)		
Arm crowd force ISO	73 kN (7 500 kgf)	65 kN (6 600 kgf)	58 kN (5 900 kgf)
Arm crowd force SAE : PCSA	71 kN (7 200 kgf)	63 kN (6 400 kgf)	57 kN (5 800 kgf)

Excluding track shoe lug

**WINNER PLANT**

SUSSEX: 01903 230700

SURREY: 01483 456789

EMAIL: SALES@WINNERPLANT.CO.UK